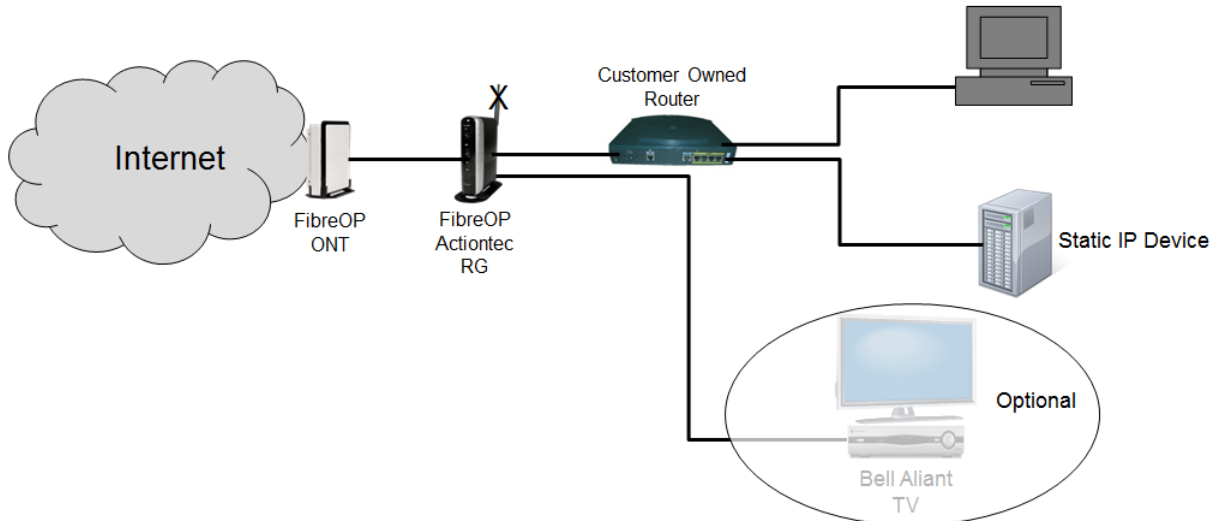


Document No.	FO1004	Issue Date:	Draft:
Work Group:	FibreOP Technical Team	July 23, 2013	Final: ✓
Title:	Single Static IP – Customer Owned LAN Router Support		Version 1.0

## Summary:

Use the following method to assist in the connection of a customer owned routing or firewall device connected directly to the Bell Aliant Actiontec Routing Gateway in a Single Static IP configuration.

## Illustration:



# Table of Contents

Table of Contents .....	2
Figures .....	2
Prerequisites and Assumptions .....	3
Prerequisites .....	3
Assumptions.....	3
Adding a Customer Owned routing or firewall device to your Static IP Network .....	4
Configuring a FibreOP Actiontec RG .....	4
Disabling Wireless on the FibreOP Actiontec RG.....	4
Configuring a customer LAN Router .....	5
Additional Information.....	6

## Figures

Figure 1 Wireless Setup Basic page.....	5
---	---

## **Prerequisites and Assumptions**

### **Prerequisites**

Bell Aliant owned FibreOP Actiontec GW configured according to Configuration Note FO1001.

### **Assumptions**

This configuration assumes that the device requiring the static IP address is connected directly to a customer owned Routing or Firewall device that is connected to the Bell Aliant owned FibreOP Actiontec RG by an Ethernet cable.

## Adding a Customer Owned routing or firewall device to your Static IP Network

Use the following procedures when adding a routing or firewall device to your Static IP LAN. You must ensure you have configured the proper settings on the FibreOP Actiontec GW, as well as, the routing or firewall device.

### Configuring a FibreOP Actiontec RG

Use the following guides to ensure you have properly configured your FibreOP Actiontec RG.

- Configure Static IP facing your LAN router according to FO002
- Configure Port Forwarding using FO003

**SECURITY WARNING:** Connecting other customer owned devices directly to the FibreOP Actiontec RG or using Wi-Fi on the FibreOP Actiontec RG will bypass any of the security configured on the customer owned routing or firewall device. Reduce the possibility of security breaches by:

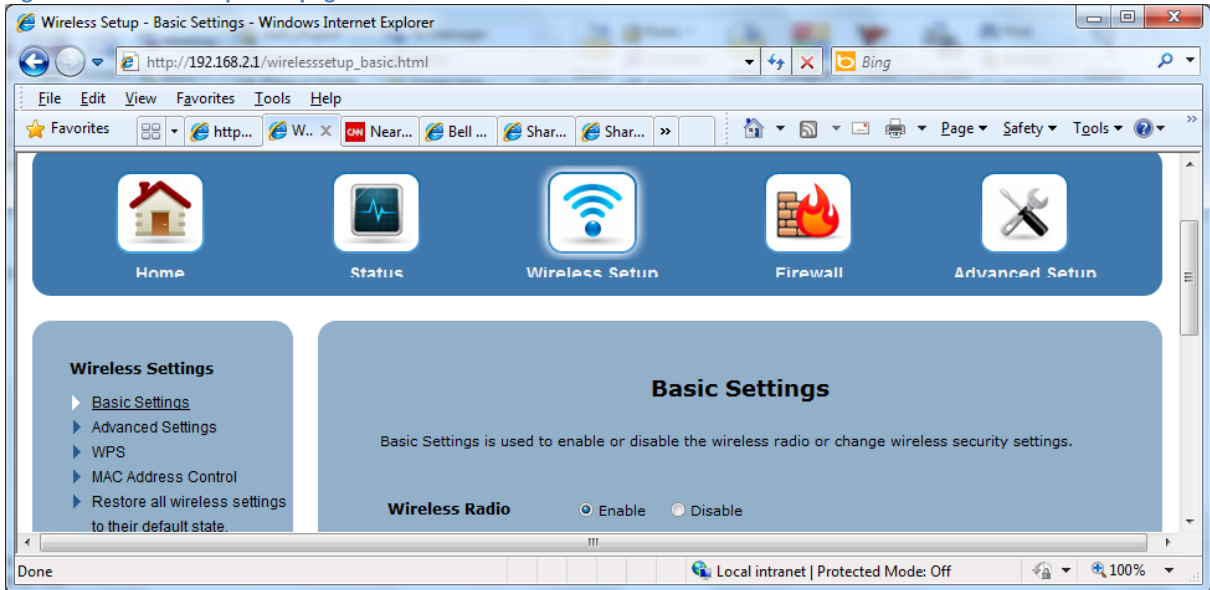
1. Connecting all Local Area Network (LAN) devices to ports on the customer owned routing or firewall device.
2. Disabling the wireless feature on the FibreOP Actiontec RG.

### Disabling Wireless on the FibreOP Actiontec RG

Use the following steps to disable Wi-Fi on the FibreOp Actiontec RG.

1. Log into the management user interface by browsing 192.168.2.1 using any browser from a computer connected to your network.  
Use the User name and password that were set during installation.
2. Click on **Wireless Setup**, located at the top centre.
3. Click **Basic Settings** on the left hand side of page.  
The Wireless Setup Basic page shown in figure 1 will appear.

Figure 1 Wireless Setup Basic page



4. Select the Disable radio button.
5. Scroll to the bottom of the page and Click Apply.

### Configuring a customer LAN Router

Due to the enormous amount of routing/firewall devices in the market, Bell Aliant is not able to provide specific configuration steps. It is important to remember the following when configuring your Router or Firewall Device;

- Configure the WAN interface on the Router/Firewall as either;
  1. DHCP:
    - Configure the FibreOP Actiontec RG for DHCP Reservation, using Configuration Note FO1002, to ensure that your WAN IP address on your router/firewall never changes.
  2. Static IP:
    - Select an IP address from the range: 192.168.2.2 to 192.168.2.9 as per Configuration Note FO1002.
- Configure the LAN interface of the Router for Static IP if required

For detailed configuration assistance in configuration your router/firewall, please contact your router/firewall vendor or manufacture.

## Additional Information

- For Configuration Troubleshooting, please refer to our Configuration Note FO1005: FibreOP Static IP Troubleshooting Guide
- To support incoming internet traffic to the device requiring a Static IP. Port forwarding rules are required in the FibreOP Actiontec RG as outlined in Configuration Note FO1003. Similar rules must be configured in the customer LAN router.
- For detailed configuration assistance in configuration your router, please contact your router vendor or manufactures.